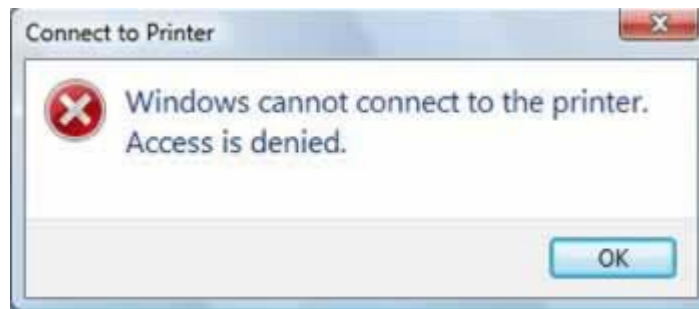


Windows Vista: Windows Cannot Connect To The Printer. Access is Denied

One of the more interesting errors in Windows Vista happens when you try to connect to a shared network printer. Most of the time you'll receive an "Access is Denied" error when trying to connect even though you can see the printer on the network and everything else is working properly.

Everything else on the network appears to work properly, shared files, internet access, etc. However, you just cannot access the shared printer and print.

The solution is to add the printer as a local printer and then try printing. Follow the directions below to accomplish this.



1. Go into Control Panel
2. Underneath the Hardware and Sound category, click on Printer
3. Click on Add a printer from the top menu
4. Click on Add a Local Printer
5. Choose Create a New Port with type of port remaining Local Port, then click Next
6. In the Port Name box type the path to the printer you wish to connect to and Click Ok

Ex. \\mycomputer\myprinter

If the computer you wish to connect to is named Bob and the printer is called HP then the path would be \\Bob\HP

7. In the Install Printer Driver screen, select your printer from the list or choose Have Disk and find the location of the printer drivers on the computer then click Next and then click Finish.
8. You should now see the printer installed in the Printers window.
9. Right-click on the printer and click Properties
10. On the General tab, click Print Test Page to test the printer.

You should now be able to print from Windows Vista to this networked printer with any problems.